

US TYPE HEAVY DUTY WIRE ROPE THIMBLE

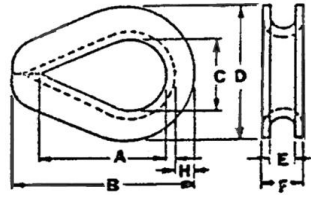
Material: cold rolled steel

Technology: punching

Finish: hot dip galvanized

Marking: size, "H"

Size: 1/4"-2"



SIZE (Inches)	Approx. Weight (lbs)	Dimensions (Inches)						
		A	B	C	D	E	F	H
1/4"	0.065	1.62	2.19	0.88	1.50	0.28	0.41	0.25
5/16"	0.118	1.88	2.50	1.06	1.81	0.34	0.50	0.30
3/8"	0.216	2.12	2.88	1.12	2.12	0.41	0.63	0.39
7/16"	0.347	2.38	3.25	1.25	2.38	0.47	0.72	0.45
1/2"	0.510	2.75	3.62	1.50	2.75	0.59	0.89	0.48
5/8"	0.757	3.25	4.25	1.75	3.12	0.66	1.00	0.53
3/4"	1.581	3.75	5.00	2.00	3.81	0.78	1.22	0.69
7/8"	1.778	4.25	5.50	2.25	4.25	0.94	1.38	0.78
1"	3.139	4.50	6.12	2.50	4.75	1.06	1.56	0.88
1 1/8-1 1/4"	4.000	5.12	7.00	2.88	5.88	1.31	1.88	1.25
1 1/4-1 3/8"	8.860	6.50	9.08	3.50	6.81	1.44	2.25	1.29
1 3/8-1 1/2"	12.948	6.25	9.00	3.50	7.12	1.56	2.62	1.31
1 5/8"	17.000	8.00	11.25	4.00	8.12	1.72	3.00	1.38
1 3/4"	17.750	9.00	12.19	4.50	8.50	1.84	3.06	1.50
1 7/8-2"	27.750	12.00	15.12	6.00	10.38	2.09	3.38	1.69

US TYPE HEAVY DUTY WIRE ROPE THIMBLE

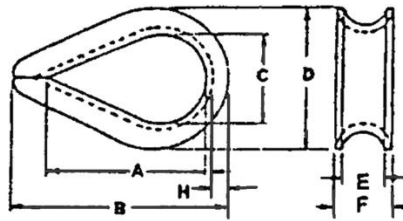
Material: cold rolled steel

Technology: punching

Finish: electro galvanized

Marking: size, "L"

Size: 1/8"-11/4"



SIZE (Inches)	Approx. Weight (lbs)	Dimensions (Inches)							Nut Torque (ft lbs)
		A	B	C	D	E	F	G	
1/16"	0.043	0.331	0.636	0.669	0.147	0.5	0.364	0.431	2
1/8"	0.043	0.441	0.742	0.862	0.182	0.544	0.415	0.518	3
3/16"	0.068	0.572	0.918	1.06	0.236	0.624	0.515	0.602	4.5
1/4"	0.145	0.68	1.146	1.291	0.297	0.825	0.593	0.726	15
5/16"	0.15	0.736	1.218	1.356	0.297	0.908	0.644	0.795	15
3/8"	0.215	0.876	1.468	1.588	0.362	1.018	0.881	0.866	30
7/16"	0.24	0.952	1.615	1.696	0.362	1.009	0.884	0.885	40
1/2"	0.37	1.092	1.985	1.903	0.428	1.402	0.925	1.023	45
5/8"	0.59	1.309	2.176	2.246	0.48	1.408	1.112	1.121	75
3/4"	0.84	1.375	2.533	2.378	0.542	1.495	1.302	1.265	75
7/8"	1.28	0.75	2.922	2.768	0.611	1.825	1.523	1.463	130
1"	1.5	1.837	3.265	3.094	0.588	2.198	1.76	1.666	130
1-1/8"	2.43	2.065	4.355	3.465	0.725	2.458	1.898	1.854	200

DIN6899 B TYPE THIMBLE

Material: cold rolled steel

Technology: punching

Finish: electro galvanized

Size: 2.5-40mm



EUROPEAN TYPE THIMBLE

Material: cold rolled steel

Technology: punching

Finish: electro galvanized

Size: 6-32mm



STANDARD TYPE THIMBLE

Material: cold rolled steel
Technology: punching
Finish: electro galvanized
Size: 6-24mm



SEMI-CLOSED THIMBLE

Material: Mild steel
Technology: welded or weldless
Finish: zinc plated or painted
Size: 12-55mm



DIN3091 HEAVY MALLEABLE THIMBLE

Material: malleable
Technology: casting
Finish: hot dipped galvanized
Size: 8-44mm



DIN3091 DUCTILE IRON THIMBLE

Material: malleable
Technology: casting
Finish: hot dipped galvanized
Size: 8-48mm

