

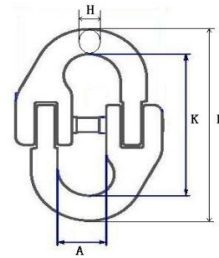
G80 EUROPEAN TYPE CONNECTING LINK

Material: alloy steel

Technology: drop forged

Finish: painted

Marking: size, WLL, G80, trace code



SIZE (mm)	Approx. Weight (kgs)	Dimensions (mm)				WLL (tons)
		A	L	K	H	
6	0.080	15	58	42	7	1.12
7	0.145	19	71.8	54.8	8.5	1.50
7/8	0.146	18	79.5	62.5	8.5	2.00
8	0.16	18	79.5	60.5	8.5	2.00
10	0.30	25	93	68	10.8	3.15
13	0.70	29	117	87	15	5.30
16	1.10	34.5	148	108.4	19.8	8.00
18	1.84	38	154	112	21	10.00
18/20	1.80	41	169.5	121.5	24	12.50
22	3.20	48	193.5	141.5	26	15.00
26	4.50	57.5	220	158	30	21.20
32	9.00	67	281	205	37	31.50

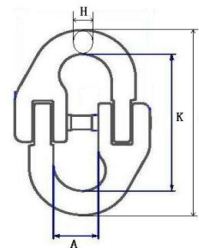
G80 U.S. TYPE CONNECTING LINK

Material: alloy steel

Technology: drop forged

Finish: painted

Marking: size, WLL, G80, trace code



SIZE (inches)	Approx. Weight (lbs)	Dimensions (mm)				WLL (lbs)
		A	L	K	H	
1/4	0.24	19.5	69	55	7	3250
5/16	0.32	18	79.5	62.5	8.5	4500
3/8	0.58	27	91.5	68.5	11.5	6600
1/2	1.2	35	111	81	15	11250
5/8	2.42	42	137.5	95.5	21	16500
3/4	3.89	43	171	126	22.5	23000
7/8	6.08	48	190.5	141.5	24.5	28750

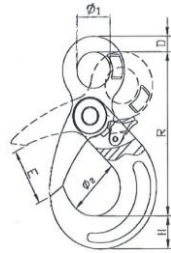
G80 EYE SELF-LOCKING HOOK

Material: alloy steel

Technology: drop forged

Finish: painted

Marking: size, WLL, G80, trace code



SIZE (mm)	Approx. Weight (lbs)	Dimensions (mm)						WLL (lbs)
		Ø1	E	Ø2	H	R	D	
7/8	2.16	25	35	42	29.5	132	12	4500
10	4.08	32.5	46	55	34.5	171	15	7100
13	8.28	42	56	64	41.5	213	19	12000

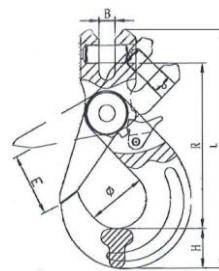
G80 CLEVIS SELF-LOCKING HOOK

Material: alloy steel

Technology: drop forged

Finish: painted

Marking: size, WLL, G80, trace code



SIZE (mm)	Approx. Weight (lbs)	Dimensions (mm)						WLL (lbs)
		B	E	Ø	H	R	L	
8	2.12	9.5	35	42	29.5	116.5	163.5	4500
10	3.53	12	46	55	34.5	145	203	7100
13	8.05	15	56	64	41.5	173	247	12000

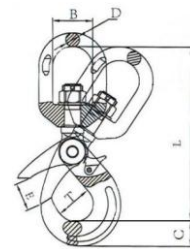
G80 U.S. TYPE SWIVEL SELF-LOCKING HOOKS

Material: alloy steel

Technology: drop forged

Finish: painted

Marking: size, WLL, G80, trace code



SIZE (mm)	Approx. Weight (lbs)	Dimensions (mm)						WLL (lbs)
		B	D	T	C	L	E	
8	4.2	35.5	12.5	42	29.5	177	32	4500
10	6.8	42	15	55	34.5	211.5	46	7100
13	9.9	50	18	64	41.5	253.5	56	12000

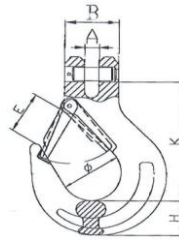
G80 CLEVIS SLING HOOK WITH LATCH

Material: alloy steel

Technology: drop forged

Finish: painted

Marking: size, WLL, G80, trace code



SIZE (mm)	Approx. Weight (kgs)	Dimensions (mm)						WLL (tons)
		A	B	Ø	H	K	E	
6	0.32	8	32	35	23	76	26	1.12
7/8	0.52	9.5	37	37	32.5	85.5	29	2.00
10	1.05	13	49	46	35	104	39	3.15
13	2	16.5	56.5	56	42.5	128	47	5.30
16	3.7	21.5	70.5	60	54	150	55	8.00
20	6	24	77	79	58	180	61	12.50
22	10.4	27	91	101	62	213	72	15.00
26	14.5	30	117	115	75	250	85	21.20
32	27	35	150	140	88	317	106	31.50

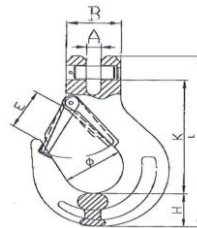
G80 CLEVIS SLING HOOK WITH LATCH

Material: alloy steel

Technology: drop forged

Finish: painted

Marking: size, WLL, G80, trace code



SIZE (mm)	Approx. Weight (kgs)	Dimensions (mm)						WLL (tons)
		A	E	B	H	K	L	
6/7	0.58	8	24	36	28	100	144	1.60
7	0.72	8.5	28	37.5	32	105	153	1.60
8	0.91	10	30	42	32.5	117	168	2.00
10	1.42	12	32	50	41	128	191.5	3.20
13	3.3	15	40	60	49	177	254.5	6.00
16	4.9	18.5	55	67	48.5	222	289	8.00

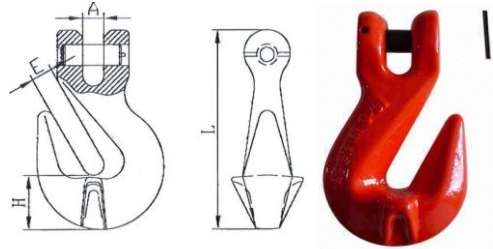
G80 CLEVIS SHORTENING GRAB HOOKS

Material: alloy steel

Technology: drop forged

Finish: painted

Marking: size, WLL, G80, trace code



SIZE (mm)	Approx. Weight (kgs)	Dimensions (mm)				WLL (tons)
		E	A	H	L	
6	0.25	8	8	16	75	1.12
7/8	0.32	10.8	9.5	21.6	90	2.00
10	0.73	13.5	12.5	30	126	3.15
13	1.6	16.5	15	42.5	163.5	5.30
16	2.8	19.2	19.5	45.5	183.5	8.00
20	5	24	24	56	219	12.50
22	6.3	27	27	68.5	254	15.00
26	14.5	30	30	77	309	21.20

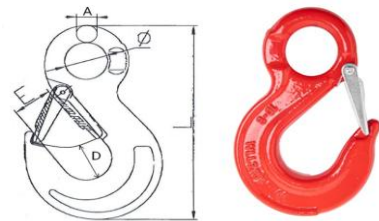
G80 EYE SLING HOOK WITH LATCH

Material: alloy steel

Technology: drop forged

Finish: painted

Marking: size, WLL, G80, trace code



SIZE (mm)	Approx. Weight (kgs)	Dimensions (mm)					WLL (tons)
		A	D	Ø	E	L	
6	0.3	9	21	20	24	108	1.12
7/8	0.4	11	26	25	30	133	2.00
10	0.9	15	39	38	34	167	3.15
13	1.7	19	54	43	39	213	5.30
16	3.2	23	64	50	46	255	8.00
20	5.8	24	80	62	50	305	12.50
22	8.5	32	80	62	71	348	15.00
26	13	35	82	64	81	394	21.20
32	17	37	112	88	102	480	31.50

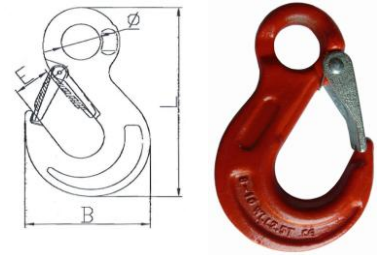
G80 EYE SLING HOOK WITH CASTING LATCH

Material: alloy steel

Technology: drop forged

Finish: painted

Marking: size, WLL, G80, trace code



SIZE (mm)	Approx. Weight (kgs)	Dimensions (mm)				WLL (tons)
		B	E	Ø	L	
6	0.53	81	24.5	20	121.5	1.12
7/8	0.65	88.5	24	25	147.5	2.00
10	1.15	108.5	32	38	184	3.15
13	1.77	127.5	36	43	225	5.30
16	3.3	162	48	43	265	8.00

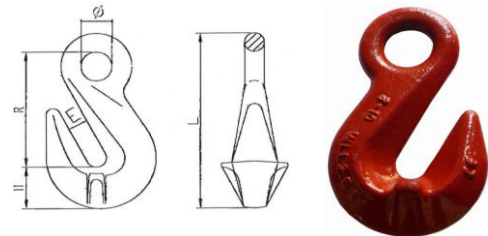
G80 EYE SHORTENING GRAB HOOKS

Material: alloy steel

Technology: drop forged

Finish: painted

Marking: size, WLL, G80, trace code



SIZE (mm)	Approx. Weight (kgs)	Dimensions (mm)					WLL (tons)
		E	Ø	H	R	L	
6	0.14	8	13.5	16	51	75.2	1.12
7/8	0.245	10.8	17	18.5	60.5	88.5	2.00
10	0.65	13	20	29	79.5	121.5	3.15
13	1.39	16.5	26	42.8	99.7	158	5.30
16	2.2	19.2	30	45.7	104	169	8.00
20	4.6	24	37	56	140	219	12.50
22	8.2	28	44	68	165	259	15.00
26	9.8	30	41	77	188.5	298	21.20
32	19.4	38	57	95	228	361	31.50

G-80 U.S. TYPE MASTER LINK

Material: alloy steel

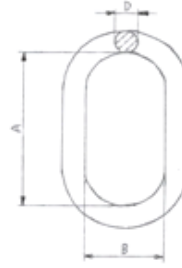
Technology: drop forged

Finish: painted

Marking: size, WLL, G80, trace code

Safety factor: 5:1(for rope)

4:1(for chain)



SIZE (inch)	Approx. Weight (kgs)	Dimensions (mm)			WLL (tons)		
		D	A	B	1 leg	2 leg (0-45°)	Rope
1/2"	0.36	13.00	127.00	63.50	1.5	2.12	3.4
5/8"	0.7	16.00	152.00	76.00	2	2.8	4
3/4"	0.93	19.00	140.00	70.00	3.15	4.25	5.6
7/8"	1.5	22.00	160.00	90.00	3.15	4.25	6.9
1"	2.1	25.00	178.00	89.00	5.3	7.5	11.8
1.1/4"	4.24	32.00	222.00	111.00	8	11.2	17.7
1.1/2"	7.17	38.00	267.00	135.00	11.2	16	27.7
1.3/4"	11.55	45.00	305.00	152.00	15	21.2	38.5
2"	17.2	51.00	355.00	178.00	21.2	30	46.5

G-80 U.S. TYPE MASTER LINK

Material: alloy steel

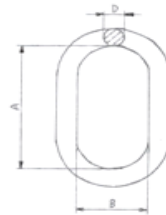
Technology: drop forged

Finish: painted

Marking: size, WLL, G80, trace code

Safety factor: 5:1(for rope)

4:1(for chain)



SIZE (mm)	Approx. Weight (kgs)	Dimensions (mm)			WLL (tons)
		D	A	B	
76-8	0.34	13.00	110.00	60.00	1.60
87-8	0.54	16.00	110.00	60.00	2.12
108-8	0.823	18.00	135.00	75.00	3.15
1310-8	1.50	22.00	160.00	90.00	5.30
1613-8	2.32	26.00	180.00	100.00	8.00
1816-8	3.95	32.00	200.00	110.00	11.20
2018-8	6.34	36.00	260.00	140.00	14.00
2220-8	8.96	40.00	300.00	160.00	17.00
2622-8	12.80	45.00	340.00	180.00	21.20
3226-8	16.55	50.00	350.00	190.00	31.50
3632-8	23.28	56.00	400.00	200.00	45.00
4036-8	32.00	63.00	430.00	220.00	56.00
72-8	45.76	72.00	460.00	250.00	63.00

G-80 U.S. TYPE SUB-ASSEMBLIES

Material: alloy steel

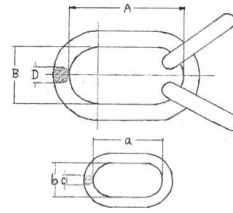
Technology: drop forged

Finish: painted

Marking: size, WLL, G80, trace code

Safety factor: 5:1(for rope)

4:1(for chain)



SIZE (inch)	Approx. Weight (kgs)	Dimensions (mm)						WLL (tons)	
		Big Link			Small Links			3 or 4 leg (0-45°)	Rope
		D	A	B	d	a	b		
3/4"	1.55	20.00	140.00	70.00	14.00	85.00	40.00	3.15	5.6
7/8"	2.18	22.00	160.00	95.00	14.00	85.00	40.00	4.25	6.9
1"	3.29	25.00	178.00	89.00	18.00	100.00	60.00	6.7	11.8
1.1/4"	7.18	32.00	220.00	110.00	22.00	100.00	60.00	11.2	17.7
1.1/2"	12.91	38.00	267.00	135.00	30.00	180.00	100.00	17	27.7
1.3/4"	21.25	45.00	305.00	152.00	32.00	180.00	100.00	23.6	38.5
2"	30.34	50.00	356.00	178.00	38.00	180.00	100.00	31.5	46.5

G-80 U.S. TYPE SUB-ASSEMBLIES

Material: alloy steel

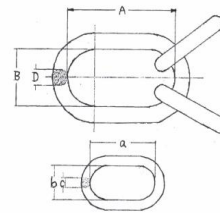
Technology: drop forged

Finish: painted

Marking: size, WLL, G80, trace code

Safety factor: 5:1(for rope)

4:1(for chain)



SIZE (mm)	Approx. Weight (kgs)	Dimensions (mm)						WLL (tons)
		Big Link			Small Links			
		D	A	B	d	a	b	
6	1.18	18.00	135.00	75.00	13.00	54.00	25.00	2.36
7	1.24	18.00	135.00	75.00	13.00	60.00	38.00	3.15
8	2.20	22.00	160.00	90.00	16.00	70.00	34.00	4.25
10	3.40	26.00	180.00	100.00	18.00	85.00	40.00	6.70
13	6.10	32.00	200.00	110.00	22.00	115.00	50.00	11.20
16	9.98	36.00	260.00	140.00	26.00	140.00	65.00	17.00
18	18.90	45.00	340.00	180.00	32.00	180.00	100.00	21.20
20	22.60	50.00	350.00	190.00	32.00	180.00	100.00	26.50
22	25.20	50.00	350.00	190.00	36.00	180.00	100.00	31.50
26	35.20	56.00	400.00	200.00	40.00	180.00	100.00	45.00
28	47.00	63.00	430.00	220.00	45.00	180.00	100.00	50.00
32	66.46	72.00	460.00	250.00	50.00	200.00	110.00	63.00